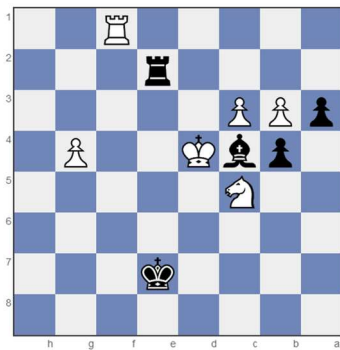


Solution to Last Month's Quiz

Chess Puzzle



The solution is for Black to sacrifice his rook with Re4+ (+ means 'giving check'), but this is not REALLY a sacrifice because after it's taken by either the king or the knight, Black will capture White's rook with Bxf1.

Now with White's rook off the board, nothing can stop the advance of Black's pawn on the a column from advancing and becoming a queen upon reaching row 1. Having a queen, with none for White, Black will have no problem quickly winning the game.

**TARGET DATE FOR September Contributions
or Questions for Aaron.**

October 20, 2020

Please reach us with your articles, news or ideas at
344 Bowfin, (650 572-9153) or email us at
JERRYANDEVE@COMCAST.NET
or by adding a *NOTE* on our Facebook Page
or our website: **BOWFINQUIRER.COM**

This Month's Quiz

Logic Puzzle

from Raymond Smullyan's 'What is the Name of this Book?'

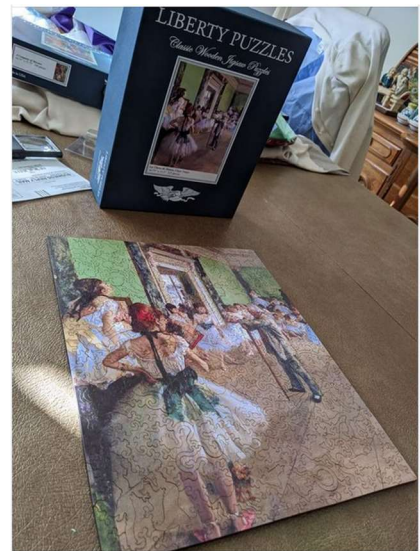
On an island where all inhabitants are either knights – who always tell the truth – or knaves – who always lie – you meet three inhabitants, A, B, and C. A and B make the following statements:

A: All of us are knaves

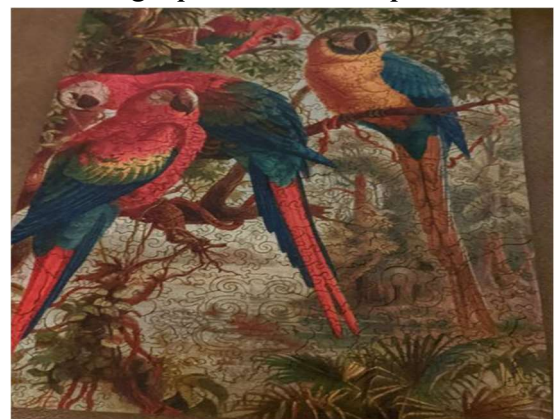
B: Exactly one of us is a knight

What are A, B, and C ?

Liberty Jigsaw Puzzles Available to Share



Degas puzzle and some pieces



A Family of Macaws

A Riddle for the Kiddies:

Q. What is heavy forward and not backward ?

A. *Ton*

A Timely? Quotation from Bartlett's Quotations

Habit is Heaven's own redress:

it takes the place of happiness.

Alexander Pushkin, *Eugene Onegin*